



International Conference on Future Education (Future Edu-2025) ICFEDU 2025

Hybrid mode (In-Person with virtual)

ICFEDU 2025 Bali

ICFEDU 2025
Supports SDG



19th & 20th April 2025

Bali, Indonesia

Organized by:

Academic Partner



**Global Society for Research and
Development(GSRD)**



info@icfedu.com



+91-9777662946



www.icfedu.com

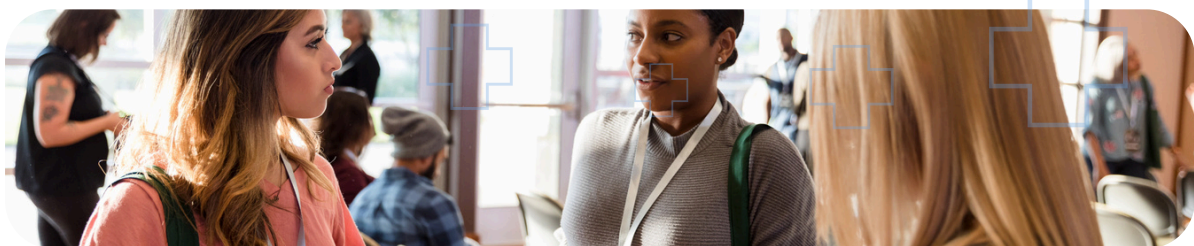
ABOUT THE CONFERENCE

International Conference on Future Education (Future Edu-2025), Organized by :GSRD and in collaboration with IRAJ International during 19th & 20th April 2025 at Bali, Indonesia join us for a vibrant exchange of ideas and insights at the forefront of multidisciplinary educational and Scientific research. Engage with esteemed scholars, researchers, and practitioners as we explore innovative approaches and current trends shaping the landscape of Education, learning and Science across diverse disciplines. Together, let's delve into transformative research that inspires and redefines the future of learning.



PURPOSE OF ICFEDU-2025 BALI

The primary objective of the ICFEDU 2025 (Future Edu-2025) to create a vibrant platform for global scholars, researchers and educators. The conference aims to facilitate the exchange of cutting-edge research across various Public health and Science and educational research discipline. ICFEDU 2025 (Future Edu-2025) seeks to encourage collaboration, foster interdisciplinary discussions, and showcase innovative methodologies, ultimately aiming to advance medical practices worldwide.



CONFERENCE TRACKS

You are invited to submit your abstract to the **2nd International Conference On Health care and Medical Research (ICFEDU-2025)** under the following tracks, but not limited to:

Technology & Innovation

- Artificial Intelligence in Learning Contexts
- Mobile Technologies in Education
- Machine Learning & Big Data
- Innovative Technologies in Education
- Internet of Things
- Online Learning
- Hybrid Learning
- Other Technologies in Education

Teaching & Learning

- Teaching Experiences & Pedagogy
- Assessment Theories & Methodologies
- Collaborative Learning
- Curriculum Design & Development
- Professional Development
- Mentoring and Coaching
- Primary & Secondary Education
- Higher Education
- Teacher Education
- Vocational Education & Training

Intersections of Education

- Interdisciplinary, Multidisciplinary & Transdisciplinary Education
- Anthropology & Education
- Multicultural Issues in Education
- Sustainability in Education

- Social Justice & Education
- Religion & Education
- Society & Education
- Industry & Education
- International Education

Student Populations

- Adult Education
- Special Education
- Gifted Education

Education Policy and Structures

- Educational Policy
- Educational Leadership
- History of Education
- Philosophy of Education

Psychology, Mind & Brain

- Educational Psychology
- Counseling, Guidance & Adjustment in

Education in the Disciplines

- Arts Education
- Business & Economics Education
- Environmental Education
- Health Education
- Language Education & Literacy
- STEM Education
- Other Areas of Education



PUBLICATION OPPERTUNITY

Publication Support in Intetnational Journals



Scopus Indexed Journals

Opportunity in Journals which are indexed in Scopus

- Regular/Special Issue
- Scopus Indexed Book chapter



Web of Science Indexed Journals

Opportunity in Journals which are indexed in WoS

- Regular/Special Issue
- WoS Indexed Book chapter



Google Scholar Indexed Journals

Opportunity in Journals which are indexed in Google Scholar

- Regular/Special Issue



EI Indexed Journals

Opportunity in Journals which are indexed in EI



International Conference Proceedings

- Opportunity to publish your research in the ICHMR Peer Reviewed International proceedings having ISBN.

Research Guidance with GSRD

GSRD provides the Research guidance to the researchers

- Proofreading
- Gramatical error checking
- Paper editing and Formatting

Contact us : info@icfedu.com for any Research paper guidance and assistance service required.



ICHMR KEYNOTE SPEAKERS



**KUSALA KUMARA JAYENDRA
FERNANDO**
Principal of Gurukula National
College, Kelaniya, Sri Lanka



MS DONNA WRIGHT
Australian Principal of the
Year Pace Therapy -
Education Consultancy
Australia



Dr. Youchaou MOBET
Post-Doctoral Researcher at
Guangzhou Nansha IT Park
Postdoctoral Programme-China



Dr MUNYANGI WA NKOLA JEROME
Professor, Biomedical Sciences
University of Kolwezi, Congo

Contact us : info@icfedu.com to join us as speaker and Guest.



info@icfedu.com



+91-9777662946



www.icfedu.com

HIGHLIGHTS OF PAST CONFERENCES



REGISTRATION FEES

Physical Registration Fee		
Category	Early blrd (till 19th MARCH 2024)	Standard Reg Fees
Student (UG/PG/Ph.D./Post Doc.)	330 USD	350 USD
Delegates(Academician, Industry)	380 USD	400 USD
Listener/ non-presenter	230 USD	280 USD
Virtual Registration Fee		
Student (UG/PG/Ph.D./Post Doc.)	249 USD	289 USD
Delegates (Academician, Industry)	319 USD	299 USD
Listener/ non-presenter	149 USD	199 USD

For Group / Bulk Participation please contact: +91-9777662946

Call/Whatsapp) for Special Dicsount

Before making the payment for the conference using any of the above methods,
Please contact us @ **+91-9777662946** or email us : **info@icfedu.com**
to get your Regd. ID

Available Payment Methods

There are three payment options available for the **ICFEDU**, BALI You can pay

- Online Payment (Using Credit/Debit Card)
- Bank Transfer (TT)
- PayPal or Stripe

<https://paymentnow.in>

**Send your payment confirmation email with Proof of payment to info@icfedu.com
before last date of Registration only.**



info@icfedu.com



+91-9777662946



www.icfedu.com



Contact Details

**International Conference on Future
Education (Future Edu-2025)**

ICFEDU-2025. BALI

Paper Submission, Registrations and Payments Inquiries
Program Manager-GSRD



+91 9777662946

Call or WhatsApp



info@icfedu.com



www.icfedu.com

Visit for Paper Submission and Registration



Scan here to register

Conference Venue:
Bali, Indonesia